

Central MWD Caucus

May 6, 2009

Serving Our Community

MWD Allocation Plan, Budget and Conservation Advertising

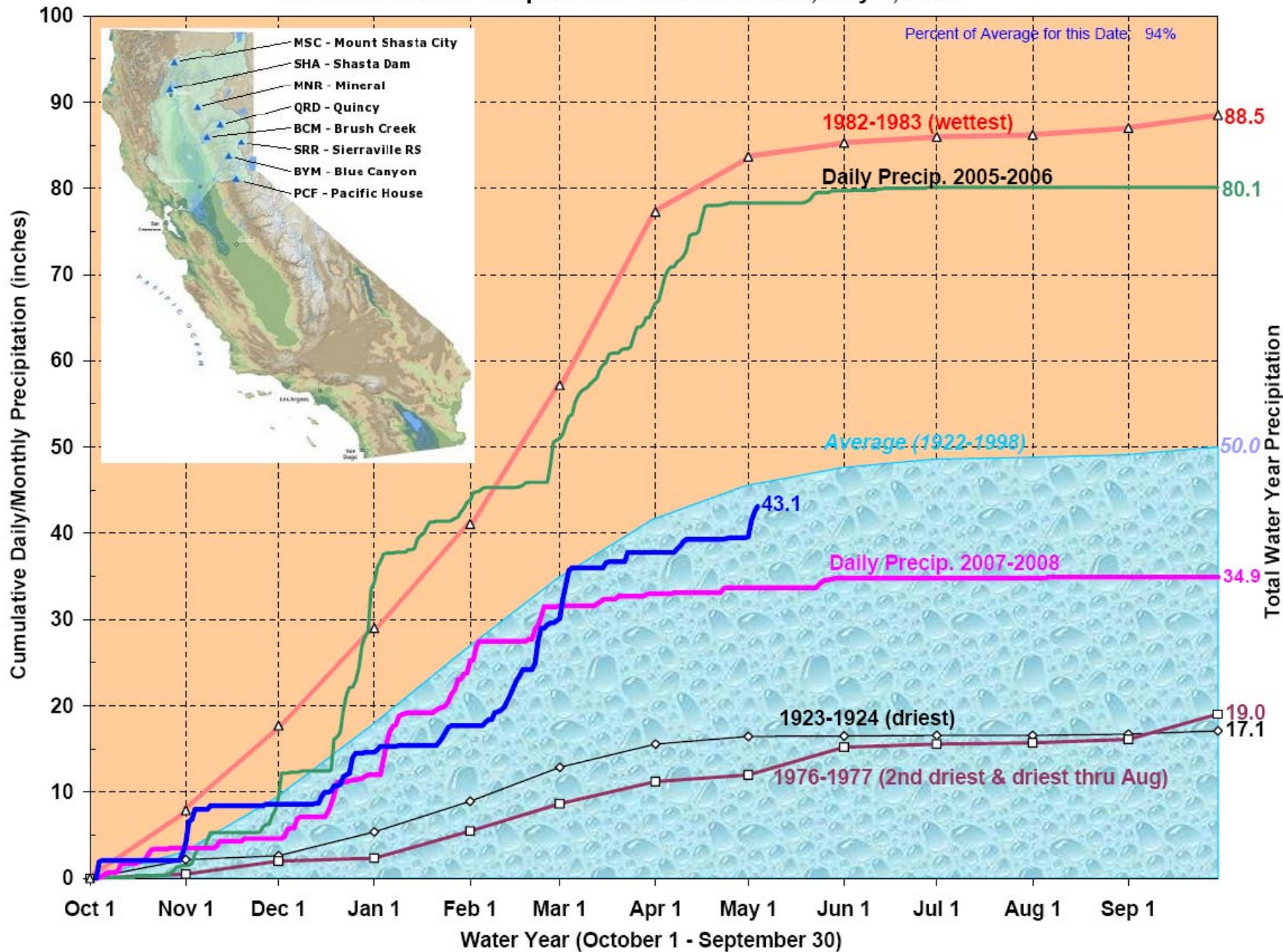
Central Basin Caucus
May 6, 2009

Kevin Wattier, LBWD

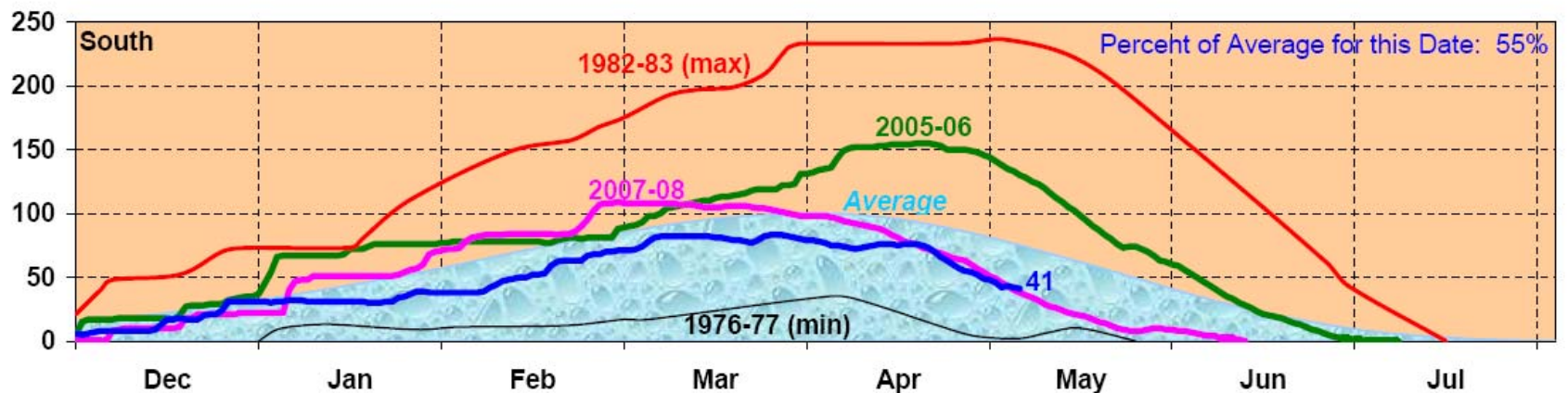
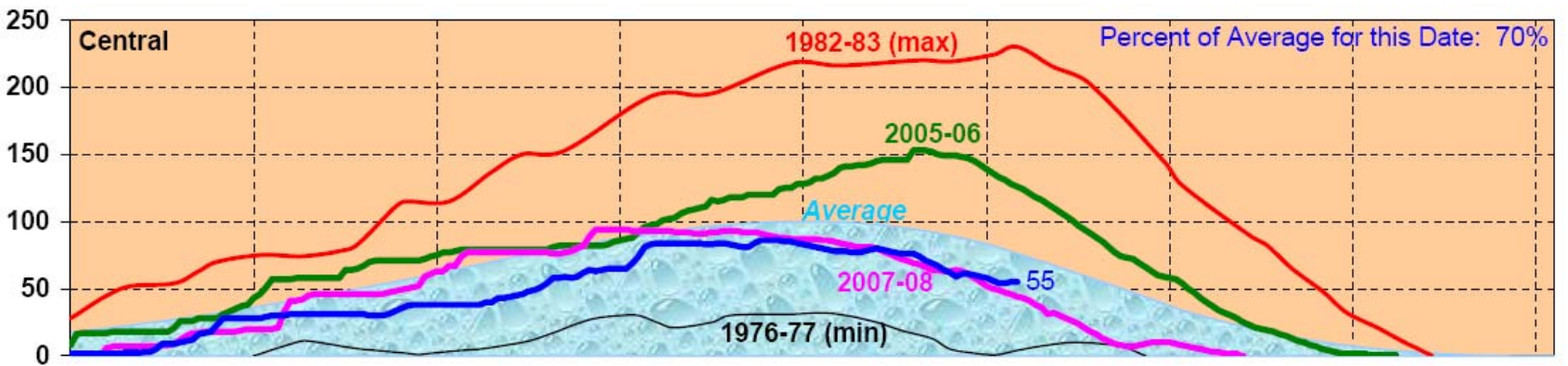
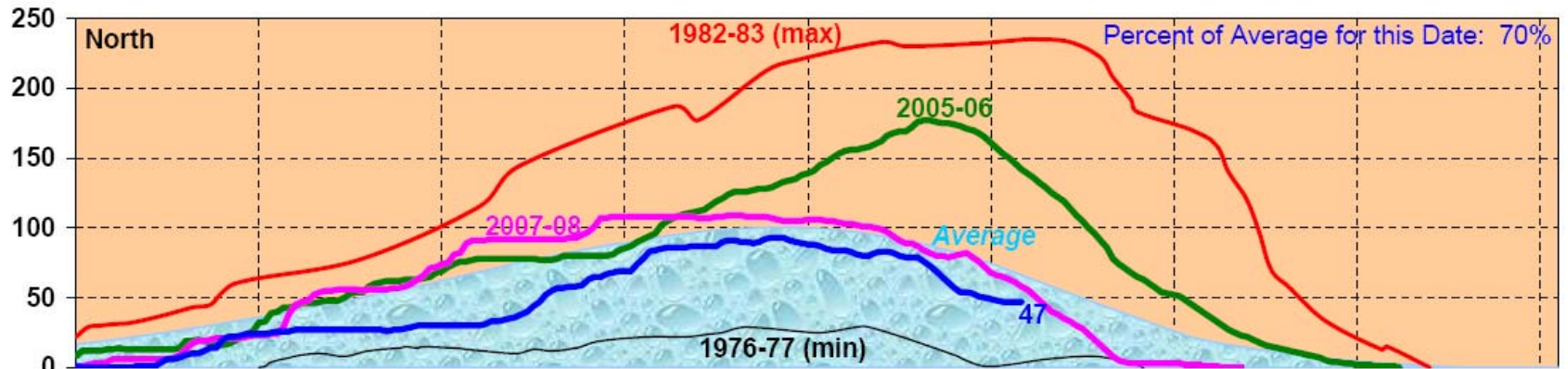
Where Southern California Gets its Water



Northern Sierra Precipitation: 8-Station Index, May 4, 2009



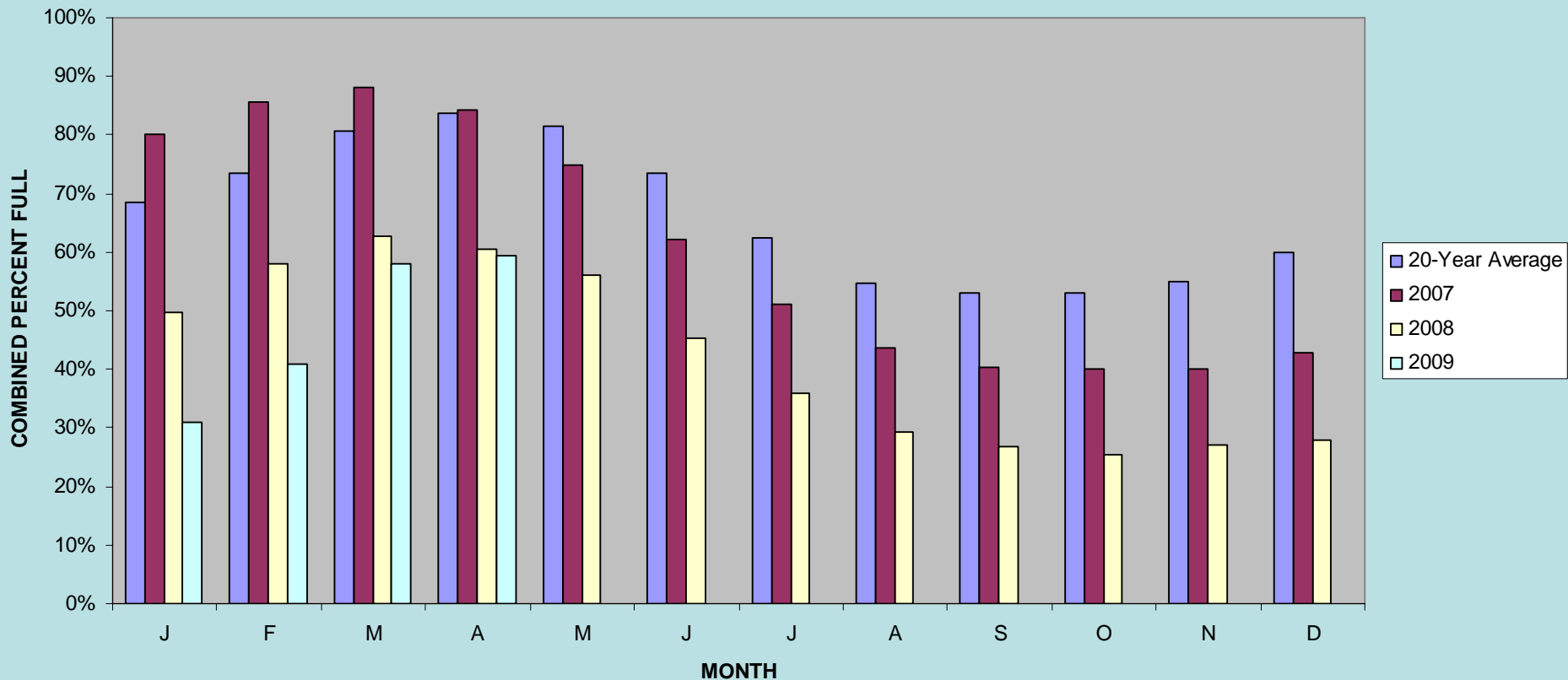
California Snow Water Content, May 4, 2009, Percent of April 1 Average



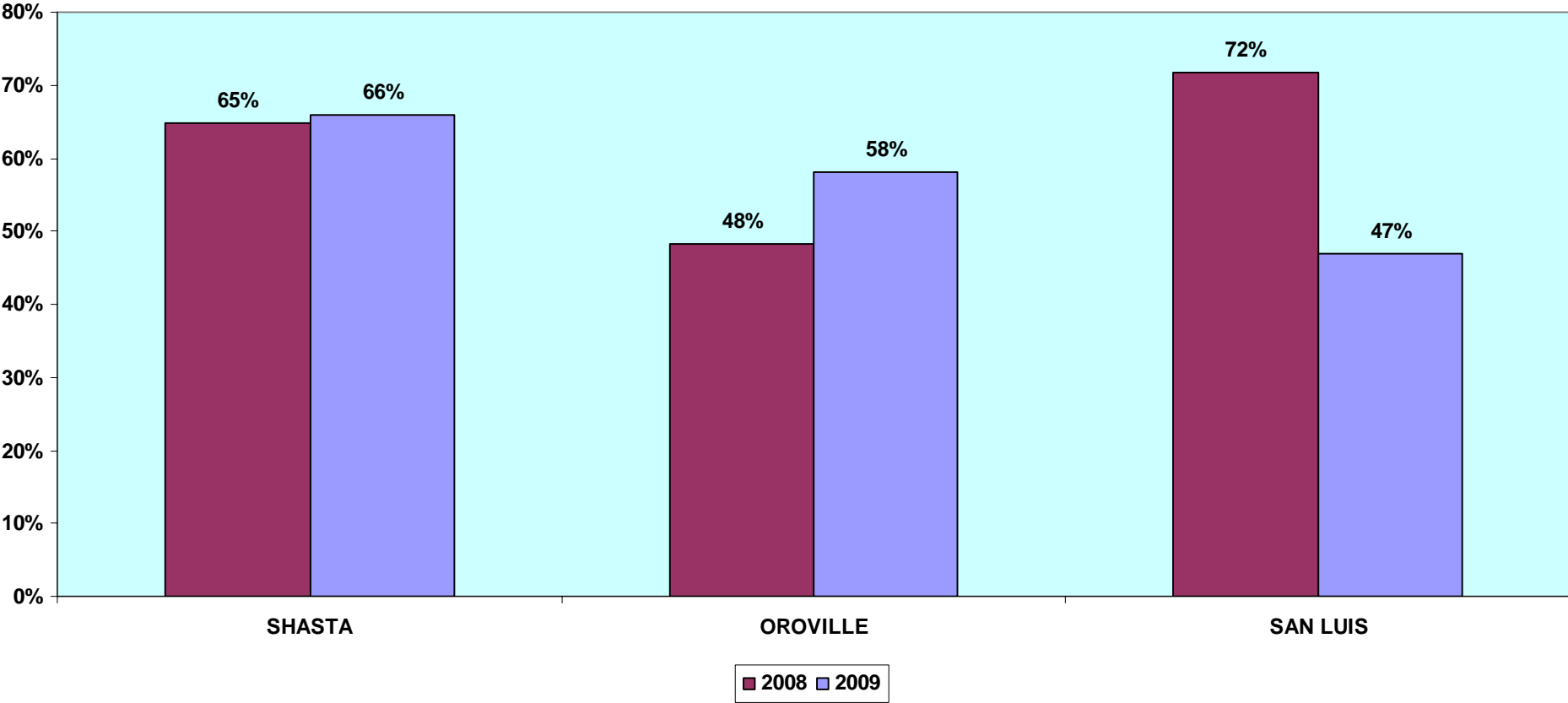
Statewide Percent of April 1: 50%

Statewide Percent of Average for Date: 65%

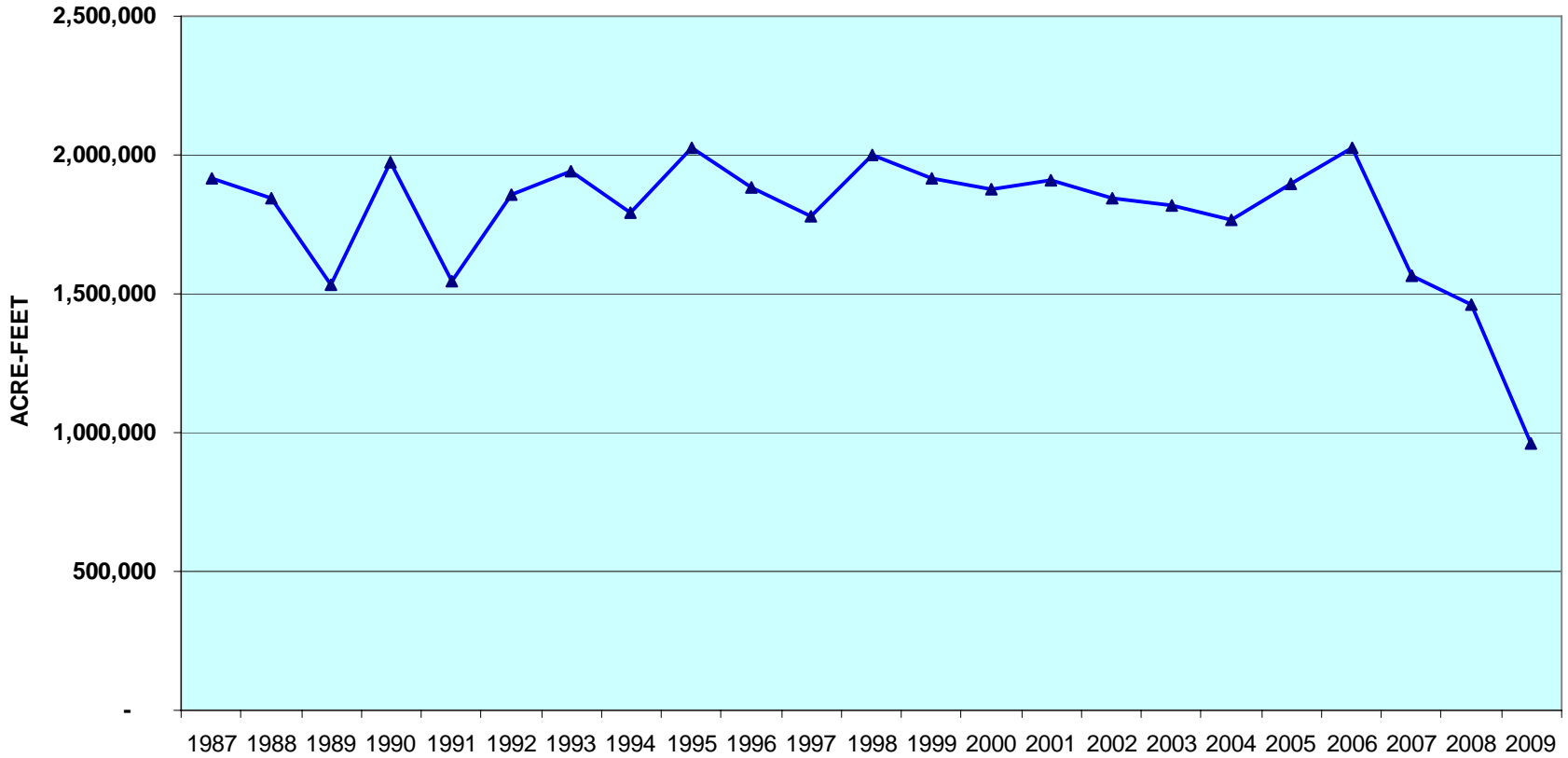
2007/08/09 NORTHERN CALIFORNIA RESERVOIR LEVELS



END OF APRIL KEY RESERVOIR LEVELS



SAN LUIS RESERVOIR APRIL EOM STORAGE

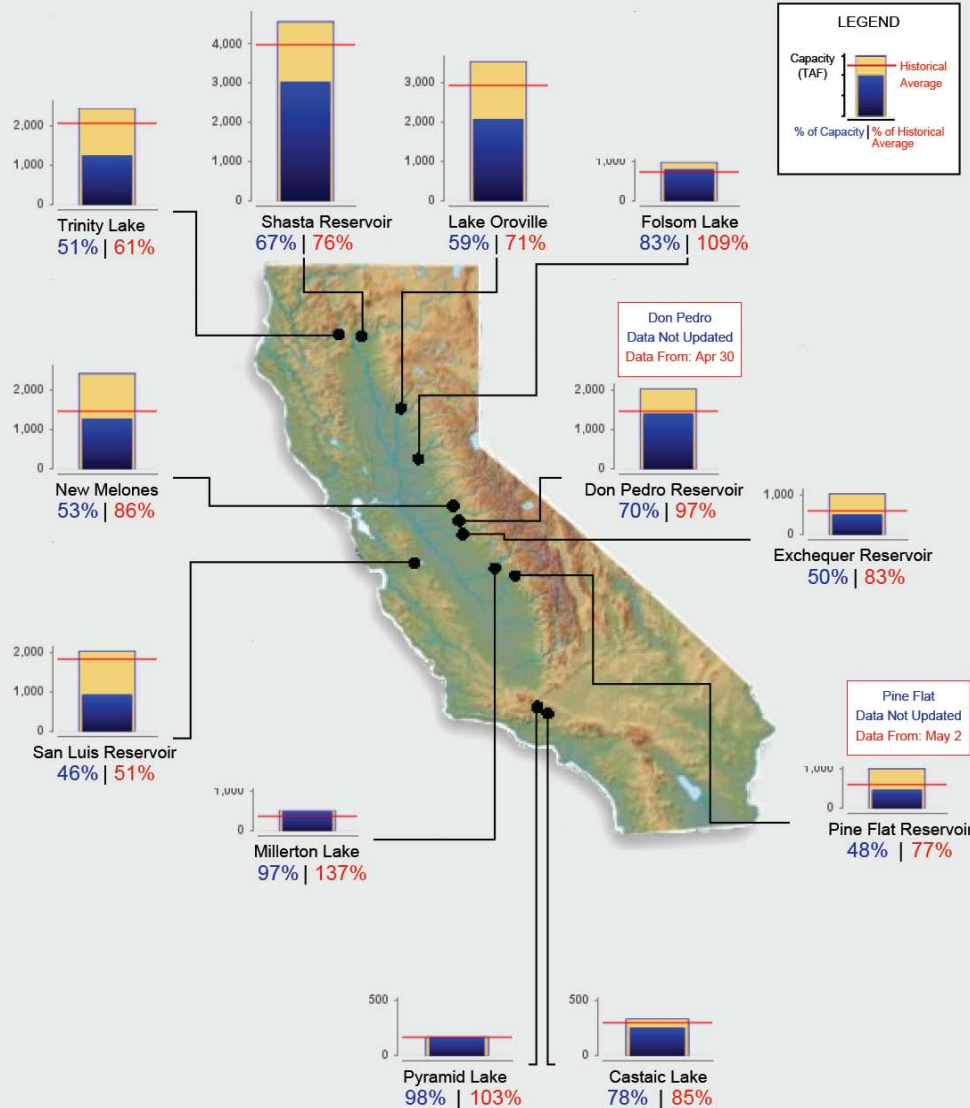




Reservoir Conditions

Ending At Midnight - May 3, 2009

CURRENT RESERVOIR CONDITIONS



KEY ISSUES

- STATE WATER PROJECT FINAL ALLOCATION -- 30%???
- GROUNDWATER REPLENISHMENT
- SALMON BIOP JUNE 2
- MWD SHORTAGE ALLOCATION -10%

Sacramento Valley Water Year Index

1986	Wet
1987	Dry
1988	Critical
1989	Dry
1990	Critical
1991	Critical
1992	Critical

2006	Wet
2007	Dry
2008	Critical
2009	Dry?
2010	???
2011	???
2012	???



*THE METROPOLITAN WATER DISTRICT
OF SOUTHERN CALIFORNIA*

Brandon Goshi
Water Resource Management Group



Update on Water Supply Allocation Plan Implementation

Central MWD Caucus
May 06, 2009

Overview

- Review of Level 2 Water Supply Allocation Calculation
- WSAP Level 2 M&I Allocation ~ 1.83 MAF
- WSAP Level 2 IAWP Allocation = 0.055 MAF

Level 2 Water Supply Allocation

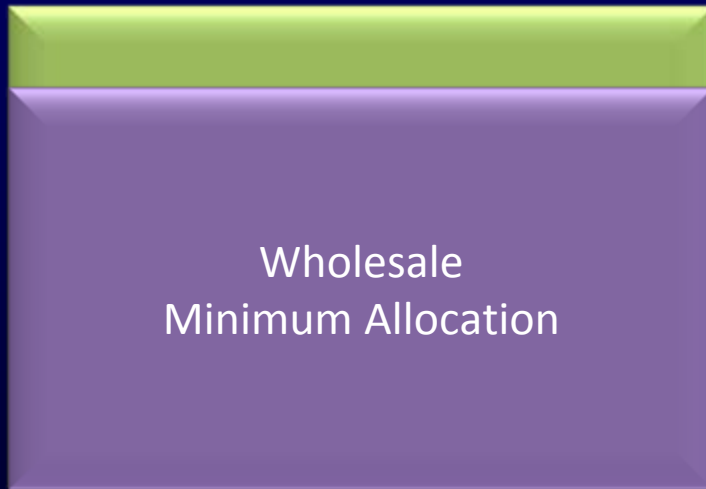
- Base Period and Allocation Year Supplies and Demands
- Two Steps for Calculating a Level 2 Water Supply Allocation
 - Wholesale Minimum Allocation
 - Conservation Hardening Credit

Base Period & Allocation Year Calculations



- Evaluate Allocation Year Local Supplies
- Remaining is Allocation Year Demand on MWD

Wholesale Minimum Allocation



- Level 2 Incorporates a 10% Regional Shortage Factor
- Cutback 1.5 X Regional Shortage
 - 15% Cutback
- 85% Wholesale Minimum Allocation

Conservation Hardening Credit



- Evaluate Retail Level Reliability
 - Local Supplies + Wholesale Minimum
- Conservation Savings
 - Device Based Savings
 - $0.5\% \times$ Conserving Retail Demands
- $\% \text{ Shortage} \times \text{Savings}$

Can Member Agency Allocations Change?

- Base Period Data Change
- Local Supply Production
- Growth Adjustment
 - DOF Updates
- MWD WSAP Level
 - Unforeseen circumstances

Important Points to Note

- July 1, 2009 through June 30, 2010
- Penalties Due Following Allocation Year
- Final Accounting is Based on Actual Certified Local Production
- Metropolitan Staff will Provide Monthly Reports on Implementation/Tracking

Important Points to Note

- July 1, 2009 through June 30, 2010
- Penalties Due Following Allocation Year
- Final Accounting is Based on Actual Certified Local Production
- Metropolitan Staff will Provide Monthly Reports on Implementation
- Designated Appeals Liaison



*THE METROPOLITAN WATER DISTRICT
OF SOUTHERN CALIFORNIA*

Brian Thomas
Budget and Rates Update



*THE METROPOLITAN WATER DISTRICT
OF SOUTHERN CALIFORNIA*

Linda Waade
Conservation Advertising Campaign



Reservoir



Move the Needle



***THE METROPOLITAN WATER DISTRICT
OF SOUTHERN CALIFORNIA***