

Central MWD Caucus

July 8, 2009

Serving Our Community



Central MWD Caucus

Presented by: Kathy Cole Legislative Representative for MWD

- Delta Bill Package
 - AB 13
 - AB 39
 - AB 900
 - AB 1253
 - SB 12
 - SB 229
 - SB 457
 - SB 458
- Water Use Efficiency
 - AB 49
 - SB 261



Central Basin's Recent Legislative Actions

- **AB 450 (De La Torre) – Recycled Water (Support)**
- **AB 626 (Eng) – Bond Revenues: Grants (Support)**
- **SB 696 (Wright) – Air Quality: CEQA Exemptions, Emissions Reduction Credits (Support)**



Water Use Efficiency Legislation

- **SB 261 (Dutton/Ducheny) – Water Use**
- **AB 49 (Feuer/Huffman) – Water Conservation:
Agricultural Water Management Planning**

Water Supply Update

Central Basin Caucus
July 8, 2009

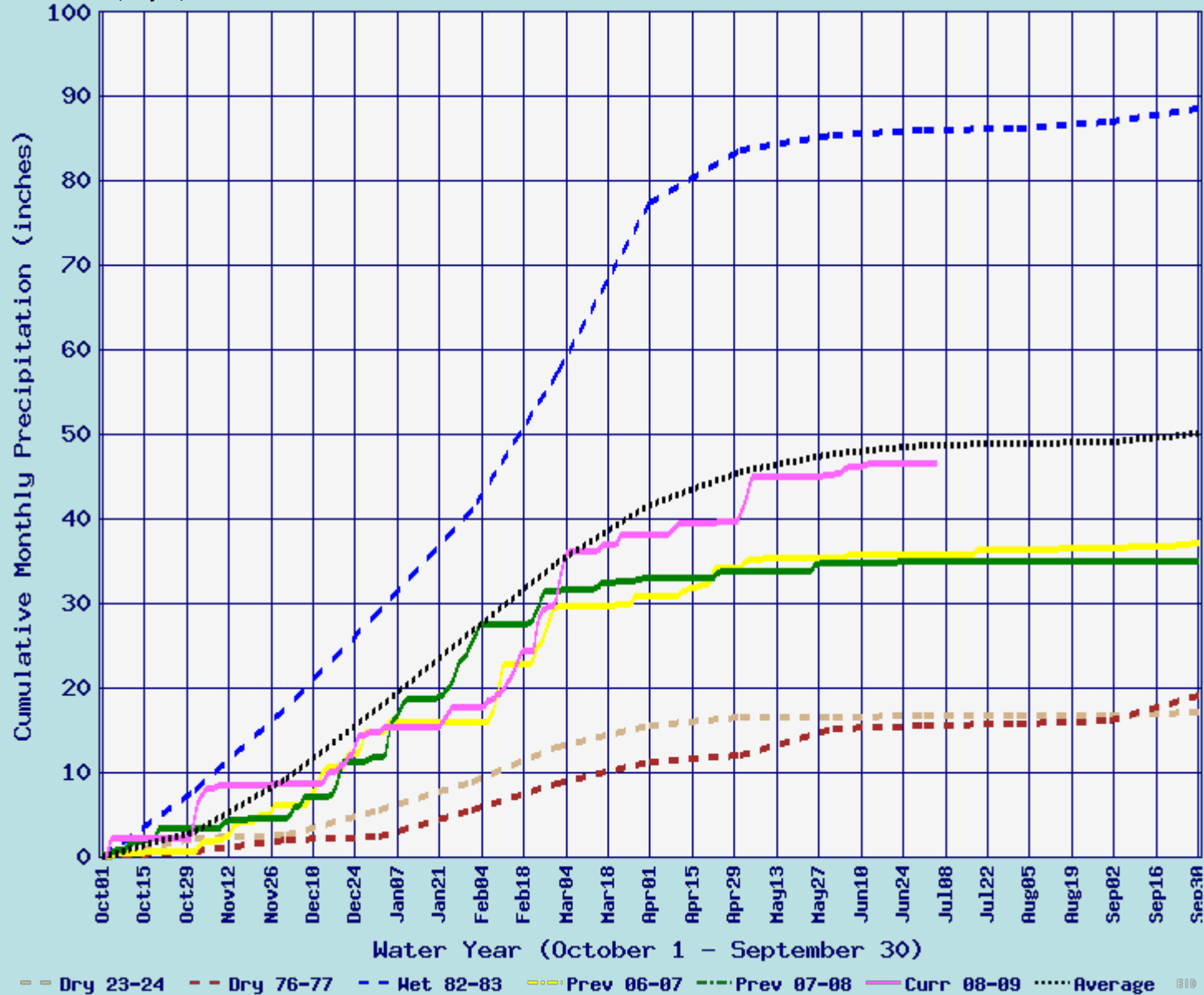
Kevin Wattier, LBWD

Where Southern California Gets its Water

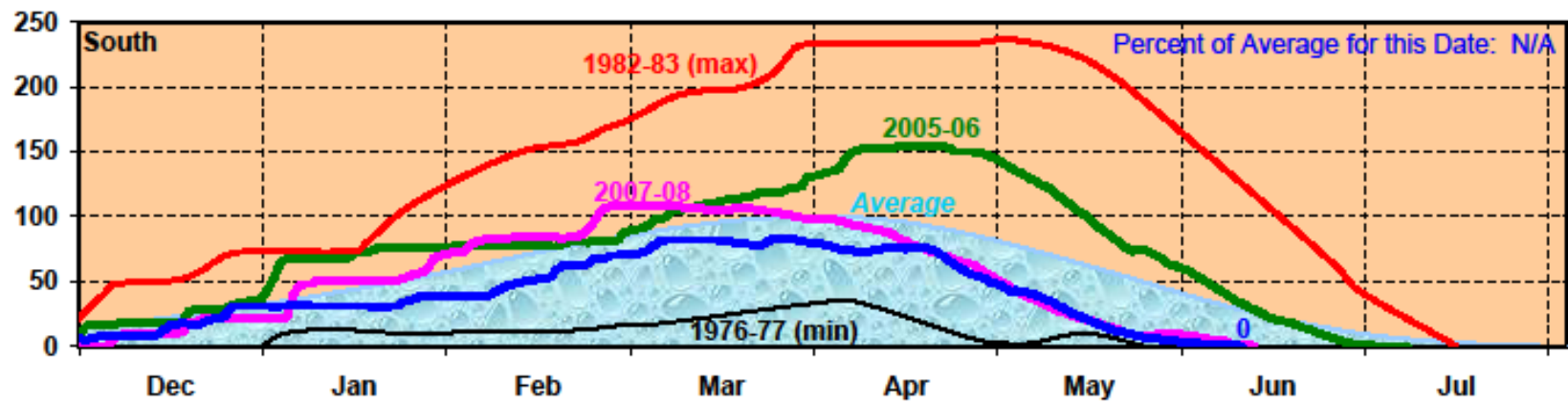
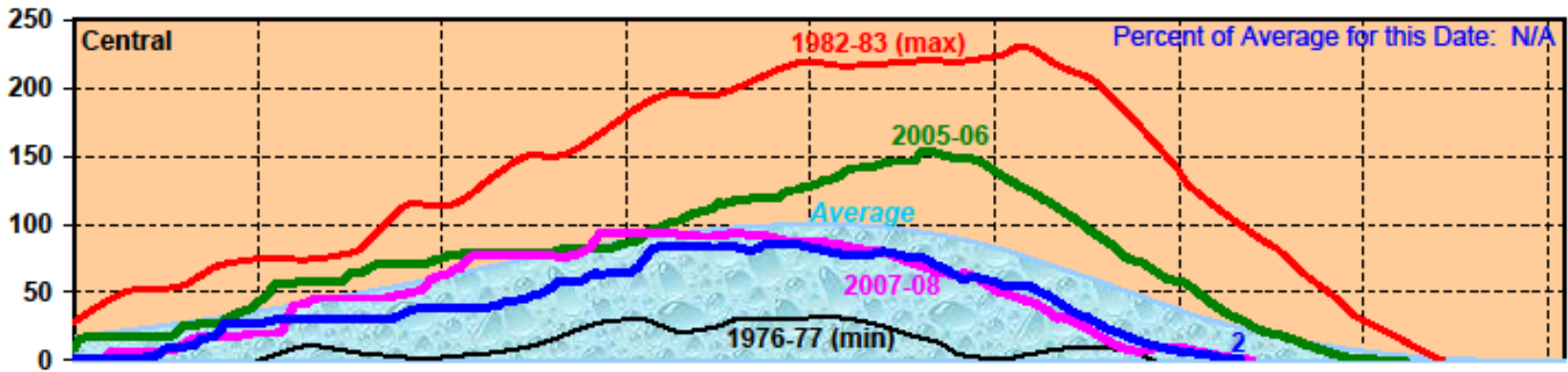
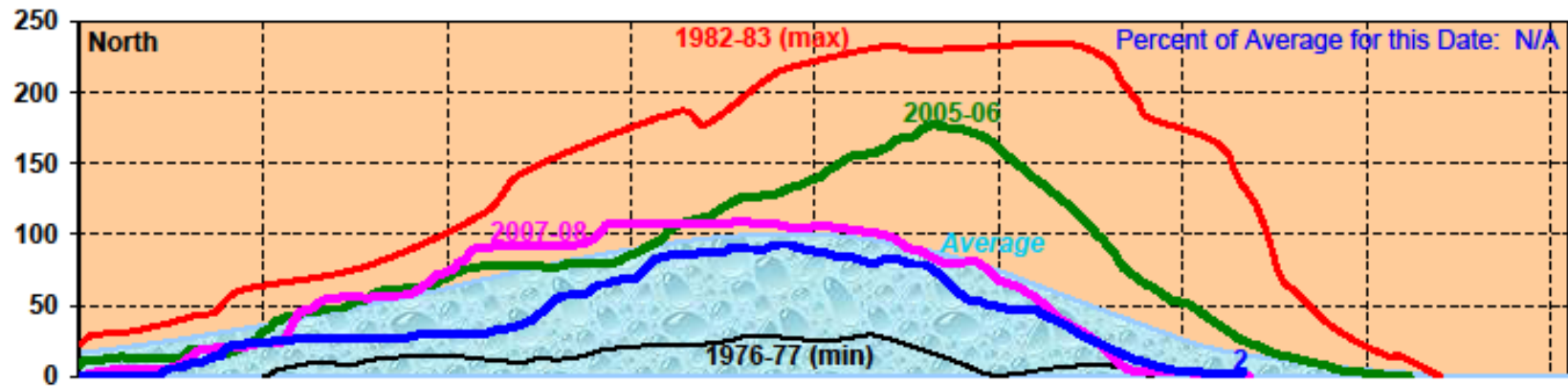


California Northern Sierra Precipitation

8-Station Index, July 06, 2009



California Snow Water Content, June 8, 2009, Percent of April 1 Average



Statewide Percent of April 1: 2%

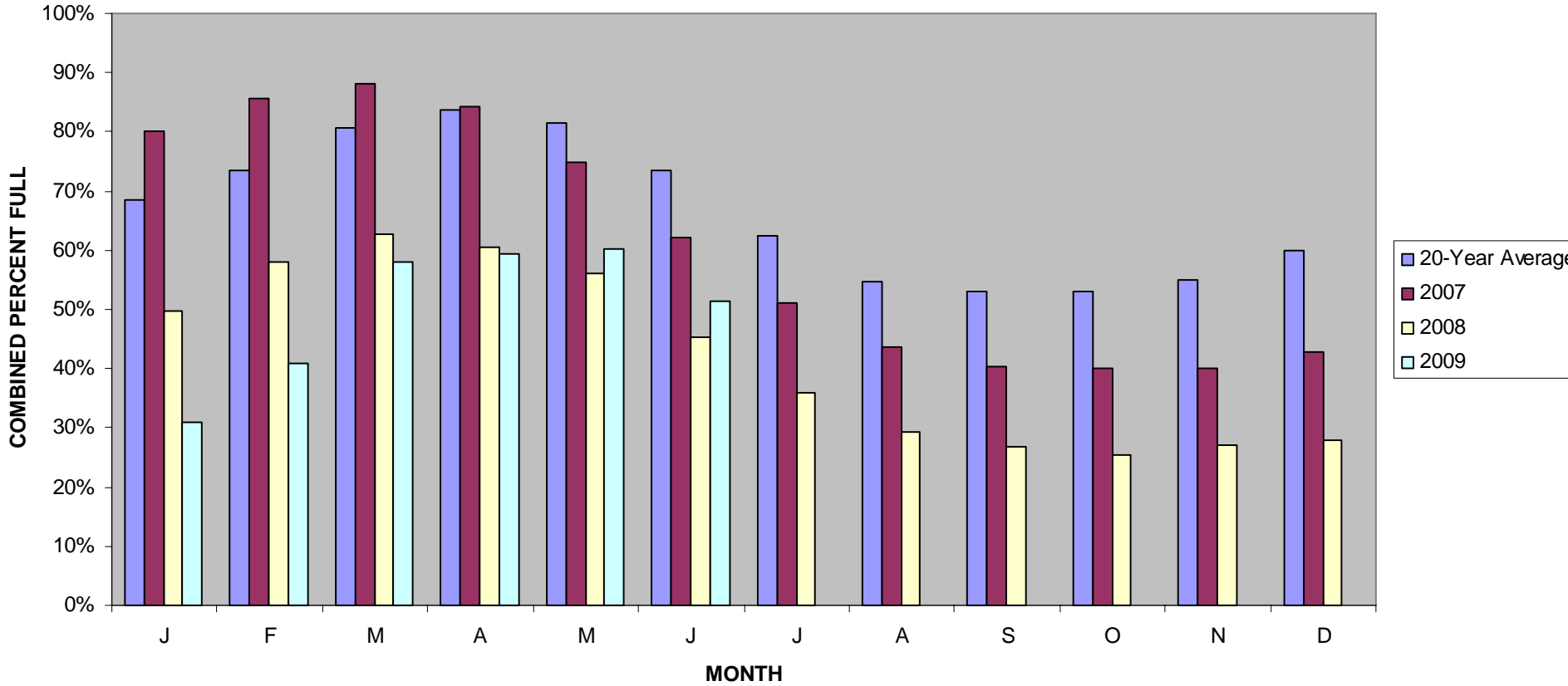
Statewide Percent of Average for Date: N/A

Sacramento Valley Water Year Index

1986	Wet
1987	Dry
1988	Critical
1989	Dry
1990	Critical
1991	Critical
1992	Critical

2006	Wet
2007	Dry
2008	Critical
2009	Dry
2010	???
2011	???
2012	???

2007/08/09 NORTHERN CALIFORNIA RESERVOIR LEVELS

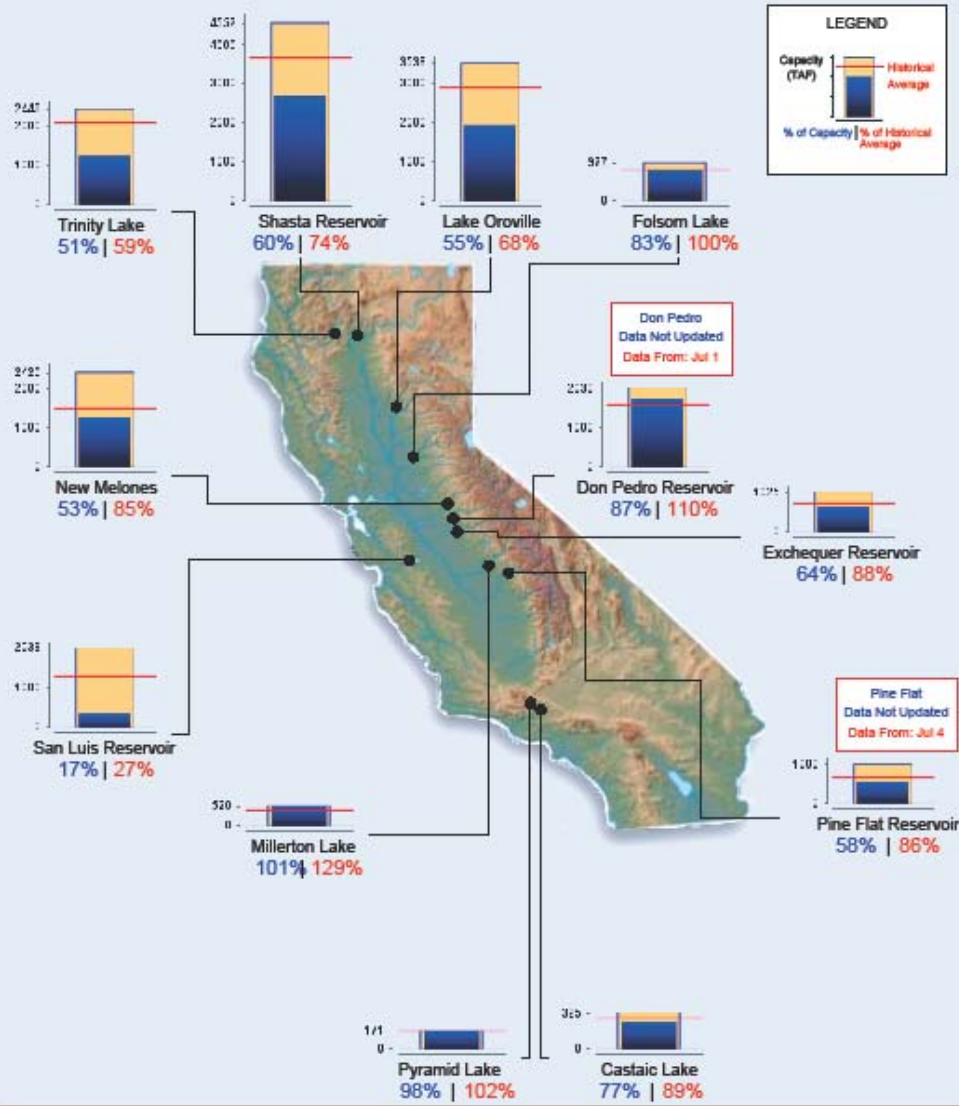




Reservoir Conditions

Ending At Midnight - July 5, 2009

CURRENT RESERVOIR CONDITIONS



Graph Updated 07/06/2009 09:30 AM

KEY ISSUES

- STATE WATER PROJECT FINAL ALLOCATION -- 40%
- SALMON BIOP JUNE 4
- MWD SHORTAGE ALLOCATION -10%



Central Basin
Municipal Water District

Regional News